



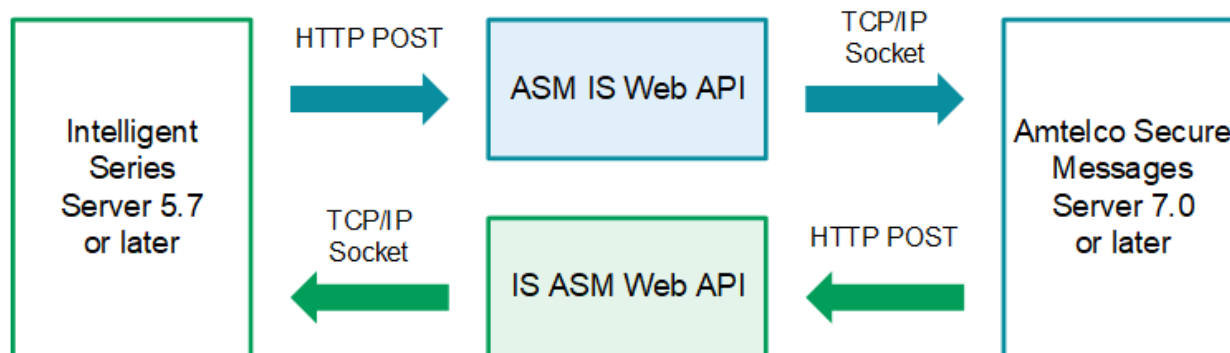
**amtelco**

R&D Software Department  
4800 Curtin Drive, McFarland, WI USA 53558  
www.amtelco.com

## Amstelco Secure Messages 7.0 and Intelligent Series 5.7 Connection Setup

All rights reserved © January 2025

Contact: [insider@amtelco.com](mailto:insider@amtelco.com)



With Amstelco Secure Messages (ASM) version 7.0 and later and Intelligent Series (IS) version 5.7 and later, the IS ASM Web API and the ASM IS Web API improve communication between the IS applications and ASM accounts and support the optional Role-Based Messaging feature. The settings on the Connections page in the Amstelco Secure Messages Admin Web and the Secure Messages Connections page in the System Setup pages of IS Supervisor establish the connection between Amstelco Secure Messages and IS.

**Note:** The IS ASM Web API and the ASM IS Web API must be installed by an Amstelco field technician before the connection can be configured in the Amstelco Secure Messages Admin Web and IS Supervisor. Contact Amstelco Field Service for assistance.

### IS Connection Setup in Amstelco Secure Messages Admin Web

The IS Connection section on the Connections page in the Amstelco Secure Messages Admin Web is used to integrate the Amstelco Secure Messages solution with the Intelligent Series suite of applications.

**To access the Connections page, click the Connections command on the Amstelco Secure Messages Admin Web navigation menu.**

The Connections page is displayed.

**To display the settings for the IS Connection, click “IS.”**

The settings for the IS Connection are displayed on the right side of the screen.

The screenshot shows the 'Administration' page of the Amtelco Secure Messages interface. On the left is a navigation menu with options: Admins, Away Messages, Circles, Configuration, Connections, Contacts, Dashboard, Devices, Events, Groups, and Licenses. The 'Connections' section is active, displaying a list of connection types: Android, Apple, Infinity, IS (selected), Spectrum, WCTP, and Web Access. The main content area shows the 'IS Connection' configuration form with the following fields:

- URL:**
- Port:**
- Customer ID:**
- Station ID:**
- Auth Token:**

At the bottom of the form are two buttons: 'Save' and 'Remove Connection'.

## URL

In Amtelco Secure Messages version 7.0 and later, the URL field is used to specify the Uniform Resource Locator (URL) of the ASM Web Service in order to connect to Intelligent Series version 5.7 and later. To connect to an older version of Intelligent Series, the URL field is used to specify the Internet Protocol (IP) address of the IS Server.

**Enter the URL of the ASM Web Service.**

## Port

The Port field is not used when connecting Amtelco Secure Messages 7.0 or later to IS 5.7 or later.

**This field should be set to “0” (zero) or left blank.**

## Customer ID

The Customer ID field is used to specify your unique IS customer ID provided by Amtelco.

**Enter your unique IS customer ID provided by Amtelco.**

## Station ID

The Station ID is used to differentiate between ASM Web Services on systems that have more than one ASM Web Service. This Station ID is used when programming IS Directory Contact Methods to indicate which ASM Web Service to use to send messages from Intelligent Series applications. If you are using more than one ASM Web Service to communicate with your IS Server, each ASM Web Service should have a different Station ID.

Do not change the Station ID unless instructed to do so by Amtelco Field Engineering.


### Auth Token

The Auth Token field is used with Intelligent Series version 5.7 and later to store a password that secures the publicly-facing ASM Web Service. This password is compared to the password stored in the Password field of the matching MSM Connection configured in the System Setup pages of IS Supervisor in order to authenticate to the IS Server.

**Enter the password to use to authenticate between the ASM Web Service and the IS Server.**

**Note:** The password entered in the Auth Token field must match the password entered in the Password field of the ASM Connection created in the following instructions.

**Click the Save button to save the new connection information and to start the connection.**

A green icon  is displayed next to IS.

## Amtelco Secure Messages Connection Setup in IS Supervisor

The Secure Messages Connections page in Intelligent Series (IS) Supervisor System Setup is used to establish a connection to one or more ASM Web Services. These connections are used to send secure messages between the Intelligent Series applications and ASM accounts.

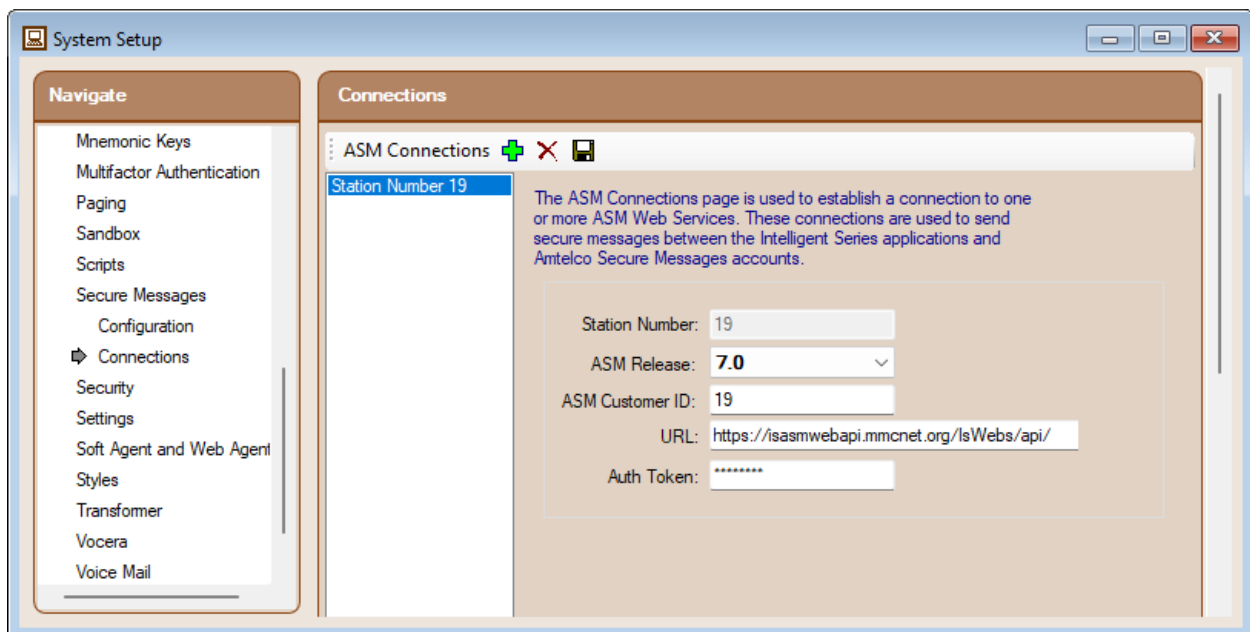
To open the Connections page, follow these steps:

**On the System Setup Navigation Menu, click the Secure Messages hyperlink.**

Hyperlinks for the Configuration and Connections pages are displayed.

**Click the Connections hyperlink.**

The Connections page is displayed.



### Adding a New Connection

**To add a new connection, click the Add ASM Connection icon. **

A new connection is created with blank properties.

### Station Number

The Station Number field is used to specify the Station ID associated with the ASM Web Service. This Station ID is used when programming IS Directory Contact Methods to indicate which ASM Web Service to use to send secure messages from Intelligent Series applications.

**Enter the Station ID associated with the ASM Web Service.**

The Station Number is displayed in the ASM Connections list when changes made to the connection are saved.

### ASM Release

The ASM Release setting is used to specify the version of Amtelco Secure Messages server used by the ASM Web Service.

**Select the Amtelco Secure Messages server version used by the ASM Web Service.**

### ASM Customer ID

The ASM Customer ID field is used to specify your unique Amtelco Secure Messages customer identification number provided by Amtelco.

**Enter your ASM customer identification number.**

### URL

The URL field is used to specify the Uniform Resource Locator (URL) of the ASM Web Service.

**Enter the URL of the ASM Web Service.**

### Auth Token

The Auth Token field is used to specify the Auth Token programmed in the IS Connection settings on the Connections page of the Amtelco Secure Messages Admin Web.

**Enter the Auth Token programmed in the Amtelco Secure Messages Admin Web.**

**Click the Save icon  to save your changes.**

The connection is added to the ASM Connections list.

If the connection has been configured in both the Amtelco Secure Messages Admin Web and IS Supervisor, secure messages can be sent between IS applications and Amtelco Secure Messages accounts.

**Requirements:**

- Amtelco Secure Messages Server 7.0 or later
- Amtelco Secure Messages Admin Web 7.0.8641.0 or later
- Amtelco Secure Messages Web Server
- Intelligent Series Supervisor 5.7.8445.3 or later